

800, 1200 SERIES

Pneumatic Toggle Clamps | Product Overview

Features:

- Low profile and compact for mounting in tight spaces
- Uniform clamping force throughout full stroke
- Accommodates variable workpiece thickness
- Single acting - air advance, spring return

Applications:

- Assembly
- Welding
- Light machining

How it Works:

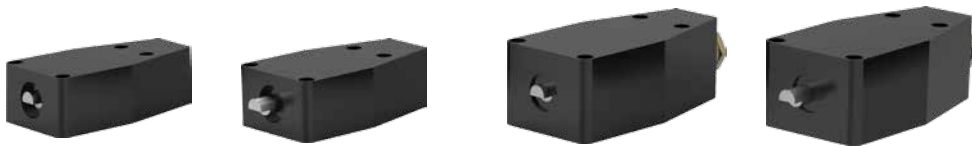
1. Clamp arm retracts fully for loading and unloading.
2. Clamp arm moves straight forward.
3. Clamp arm pivots down to hold workpiece.

800

800-E

1200 ⓘ

1200-E ⓘ



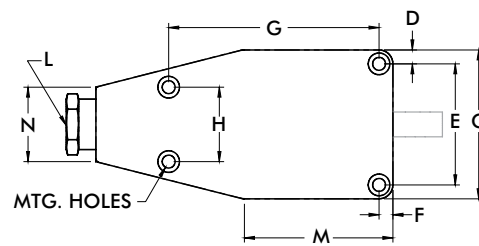
Technical Information | Holding Capacities | Dimensions

| Model | Inlet Pressure bar [PSI] | Exerting Force | Max. Pressure at Max. Mechanical Advantage† bar [PSI] | Clamping Range | Weight | Port Size |
|----------|--------------------------|------------------------------|---|----------------|--------------------|-----------|
| 800 | [70~150] 4,8~10,3 | [850~1500 lbf] 3780~6670N | 4,8 [70] | [0.09] 2,3 | [2.50lb] 1,13kg | 1/4 NPT |
| 800-E | | [650~1200 lbf] 2890~5340N | | [0.16] 4,0 | | |
| 1200 ⓘ | | [750~1600 lbf] 3340~7120N | | [0.25] 6,4 | [4.00lb] 1,81kg | |
| 1200-E ⓘ | | [550~1200 lbf] 2450~5340N | | [0.38] 9,6 | | |

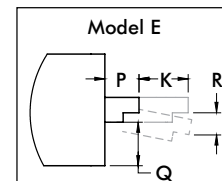
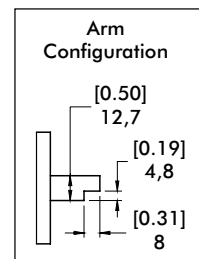
ⓘ This item is available upon request

Note: For use with pneumatic power only. This is a single acting device (air clamp, spring return), a 3-way air valve required for control.

Repair Kits: 800-00,
1200-00



Note:
K (Forward Stroke)
R (Downward Stroke)



| Model | A | B | C | D | E | F | G | H | K | L | M | N | P | Q | R | MNTG HOLES | |
|--------|----------------|-----------------|----------------|---------------|----------------|---------------|----------------|----------------|----------------|------------|-----------------|----------------|----------------|----------------|---------------|---------------|---------------|
| 800 | [1.63] 41,4 | [4.81] 122,8 | [2.72] 69,1 | [0.25] 6,4 | [2.21] 56,1 | [0.25] 6,4 | [3.13] 79,5 | [1.19] 30,2 | [0.50] 12,7 | 1/4 NPT | [2.31] 58,37 | [1.50] 38,1 | - | [0.59] 15,0 | [0.09] 2,3 | [0.26] 6,6 | |
| 800-E | | | | | | | | | | | | | [0.50] 12,7 | | [0.16] 4,1 | | |
| 1200 | [2.25] 57,2 | [6.00] 152,4 | [3.00] 76,2 | [0.28] 7,1 | [2.44] 62 | [0.28] 7,1 | [4.25] 108 | [1.50] 38,1 | [1.00] 25,4 | | | [3.00] 76,2 | [1.38] 35,1 | - | [0.63] 16 | | [0.25] 6,4 |
| 1200-E | | | | | | | | | | | | | | [0.69] 17,5 | | | [0.38] 9,7 |